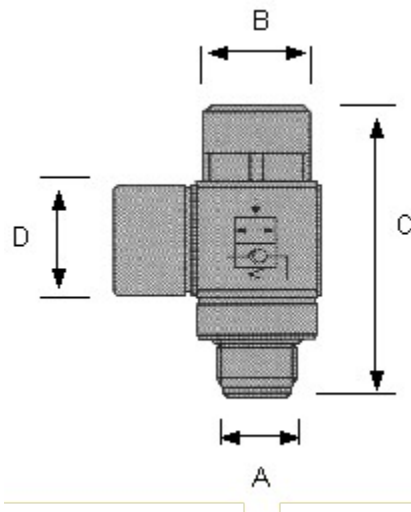


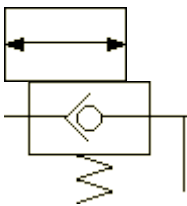
RIGHT ANGLE PILOT OPERATED CHECK VALVE



- FUNCTION: WHEN AIR PRESSURE IS APPLIED TO PILOT IT ALLOWS AIR TO FLOW IN BOTH DIRECTIONS. WHEN AIR PRESSURE IS REMOVED FROM THE PILOT, THE CHECK VALVE IS ACTIVATED WHICH ALLOWS AIR TO FLOW IN, BUT BLOCKS IT FROM EXITING.
- HAVING THE RIGHT ANGLE PILOT CHECK VALVE MOUNTED RIGHT ON THE CYLINDER HELPS CONTROL OR STOP THE PISTON WITHOUT LEAKING THROUGH SEALS OR FITTING.
- THREADED SEALANT ALREADY ON MALE THREADS.
- ABLE TO ROTATED 360 DEGREES FOR MOUNTING.



PART NO.	A	B	C	D
POC1818	1/8" NPTF	13	41	1/8" NPTF
POC1414	1/4" NPTF	17	48	1/4" NPTF
POC3838	3/8" NPTF	22	55	3/8" NPTF
POC1212	1/2" NPTF	27	65.5	1/2" NPTF
POC18532T	1/8" NPTF	13	41	5/32" tube
POC1814T	1/8" NPTF	13	41	1/4" tube
POC1414T	1/4" NPTF	17	48	1/4" tube
POC1438T	1/4" NPTF	17	48	3/8" tube
POC3838T	3/8" NPTF	22	55	3/8" tube



TECHNICAL DATA:

TEMPERATURE RANGE: -10 C TO +70 C

STANDARD MATERIALS
 SEALING ELEMENTS: NBR
 INTERNAL TURNED PARTS: BRASS
 EXTERNAL TURNED PARTS: ZINK PLATED BRASS
 PLATING: GALVANIC
 SPRINGS: STAINLESS STEEL
 STAMPED PARTS: STAINLESS STEEL
 PLASTIC PARTS: PA